

Elev 5078 OCH: 722

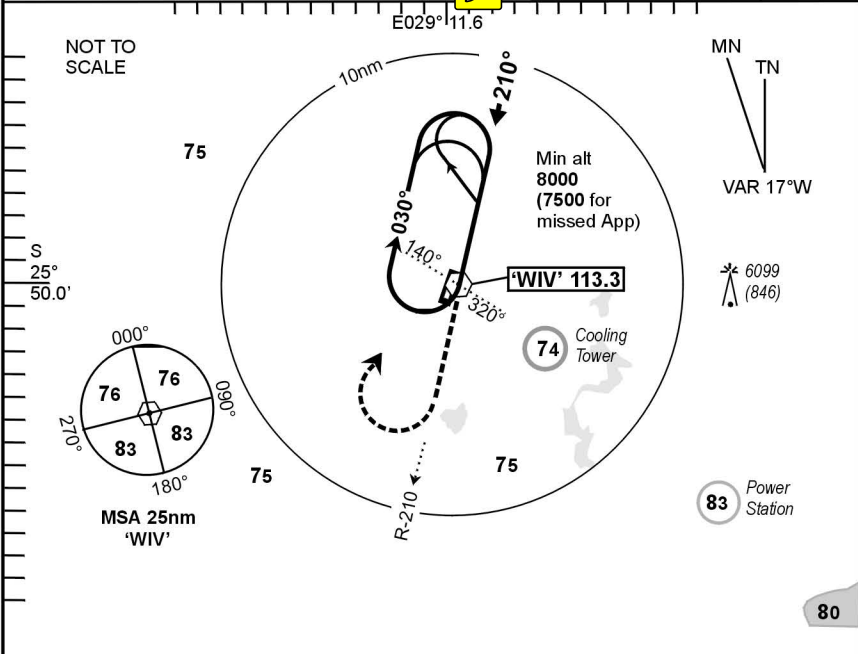
(Cat A, B) BREAKCLOUD VOR

WITBANK

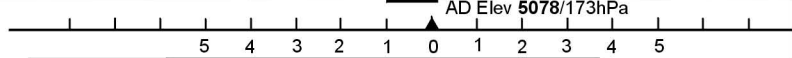
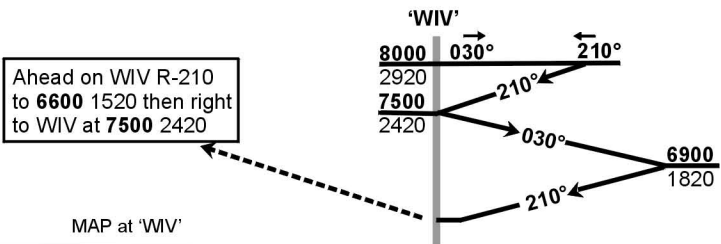
FAWI

WITBANK  
123.5 (Common traffic advisory)

VOR-01  
EFF  
08 July 04



80



Abm WIV	T.Lev		ATC 8000
	turn	T.Alt	
	kt	fpm	
1:30	200		—
1:40	180		
1:53	160		
2:09	140		
2:30	120		
3:00	100		
3:45	80		

1. This procedure is conducted outside controlled airspace, entirely at the discretion of the pilot in command.
2. Initial approach altitude 8000 or higher MSA.
3. Descend in the hold to 7500.
4. Any approach above 7500 are only with approval of Johannesburg radar (approach).
5. Procedure turn approach applicable only within 30° of the outbound heading. Use phraseology 'Executing procedure turn approach'.
6. Circle to land west of RWY only and at the discretion of the pilot.

G/S	Advisory Alt/Hgt		
	+20s	+40s	+60s
160 kt			
140			
120			
100			
80			

Rev: Topo clearance heights and MSA reviewed. Chart #.

WGS-84

© AV/DIRECT / 050204

CAA South Africa